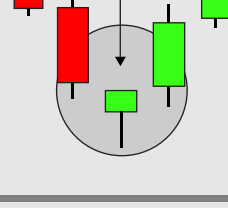


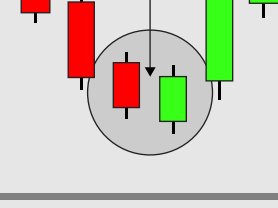
Candlestick Chart Patterns



Hammer

Small body at the top with a long lower wick, indicating potential reversal.

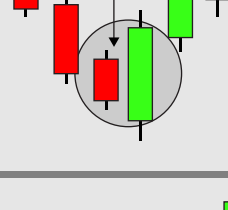
[Know More](#)



Piercing Pattern

Bullish candle closes above the midpoint of the previous bearish candle.

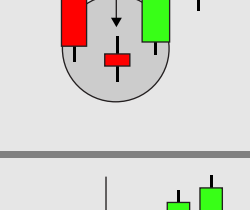
[Know More](#)



Bullish Engulfing

Bullish candle completely engulfs the previous bearish candle.

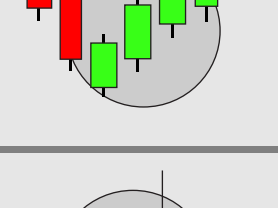
[Know More](#)



Morning Star

Three-candle pattern indicating a potential bullish reversal.

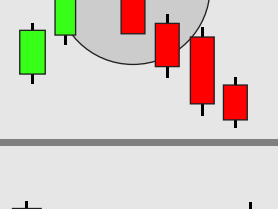
[Know More](#)



Three White Soldiers

Three consecutive long bullish candles, suggesting strong buying pressure.

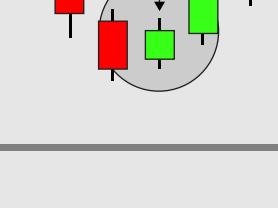
[Know More](#)



White Marubozu

Long bullish candle with no shadows, indicating strong buying interest.

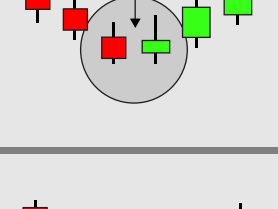
[Know More](#)



Three Inside Up

Bullish candle follows a bearish candle, closing above the first candle's open.

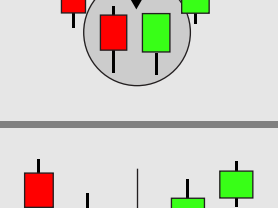
[Know More](#)



Bullish Harami

Small bullish candle within the range of the previous bearish candle.

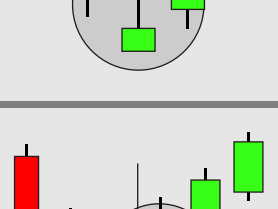
[Know More](#)



Tweezer Bottom

Two candles with matching lows, suggesting a potential reversal.

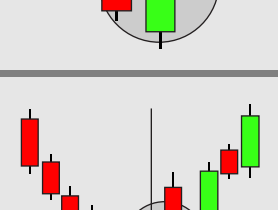
[Know More](#)



Inverted Hammer

Small body with a long upper wick, appearing after a downtrend.

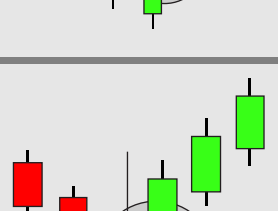
[Know More](#)



Three Outside Up

Bullish candle engulfs previous bearish candle, followed by another bullish candle.

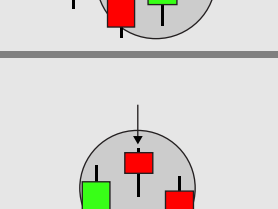
[Know More](#)



On-Neck Pattern

Bearish candle followed by a bullish candle closing near the previous close.

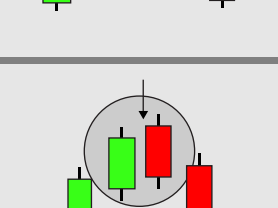
[Know More](#)



Bullish Kicker

Bearish candle followed by a bullish candle closing at the same level.

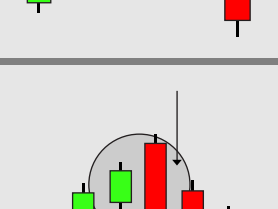
[Know More](#)



Hanging Man

Small body at the top with a long lower wick, indicating potential reversal.

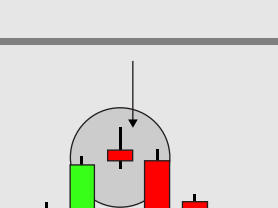
[Know More](#)



Dark Cloud Cover

Bearish candle opens above the previous close and closes below the midpoint.

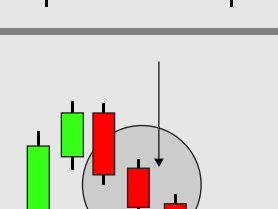
[Know More](#)



Bearish Engulfing

Bearish candle completely engulfs the previous bullish candle.

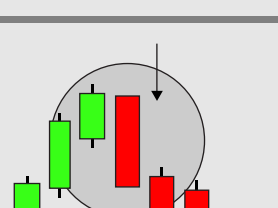
[Know More](#)



Evening Star

Three-candle pattern indicating a potential bearish reversal.

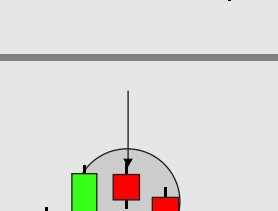
[Know More](#)



Three Black Crows

Three consecutive long bearish candles, suggesting strong selling pressure.

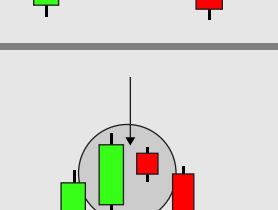
[Know More](#)



Black Marubozu

Long bearish candle with no shadows, indicating strong selling interest.

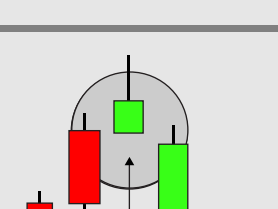
[Know More](#)



Three Inside Down

Bearish candle follows a bullish candle, closing below the first candle's open.

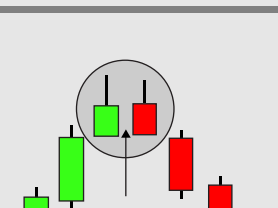
[Know More](#)



Bearish Harami

Small bearish candle within the range of the previous bullish candle.

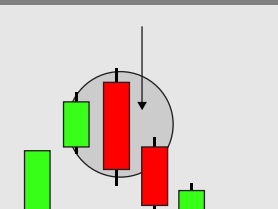
[Know More](#)



Shooting Star

Small body with a long upper wick, appearing after an uptrend.

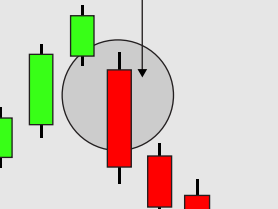
[Know More](#)



Tweezer Top

Two candles with matching highs, suggesting a potential reversal.

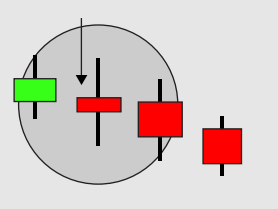
[Know More](#)



Three Outside Down

Bearish candle engulfs previous bullish candle, followed by another bearish candle.

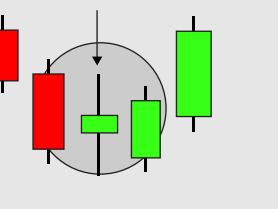
[Know More](#)



Bearish Counterattack

Bullish candle followed by a bearish candle closing at the same level.

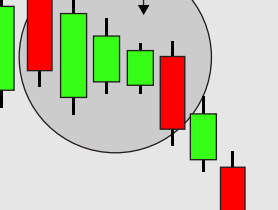
[Know More](#)



Doji

Candle with open and close at the same level, indicating indecision.

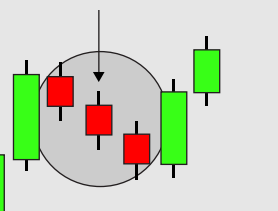
[Know More](#)



Bullish Spinning Top

Small body with long upper and lower wicks, indicating indecision.

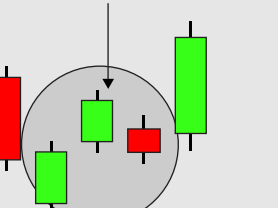
[Know More](#)



Falling Three Methods

Long bearish candle followed by small bullish candles, then another bearish candle.

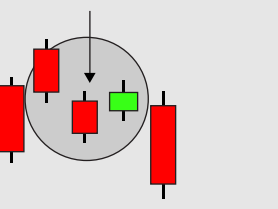
[Know More](#)



Rising Three Methods

Long bullish candle followed by small bearish candles, then another bullish candle.

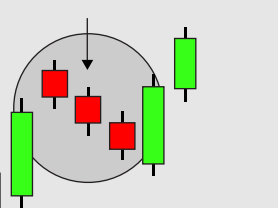
[Know More](#)



Upside Tasuki Gap

Bullish candle followed by a gap up and a bearish candle that doesn't fill the gap.

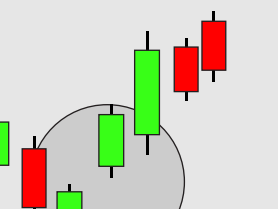
[Know More](#)



Downside Tasuki Gap

Bearish candle followed by a gap down and a bullish candle that doesn't fill the gap.

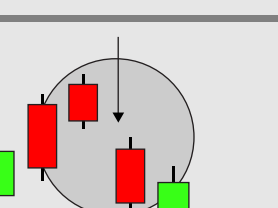
[Know More](#)



Bullish Mat Hold

Bullish candle followed by small bearish candles, then another bullish candle.

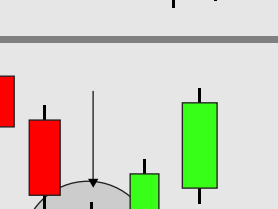
[Know More](#)



Rising Window

Gap between two bullish candles, indicating strong buying pressure.

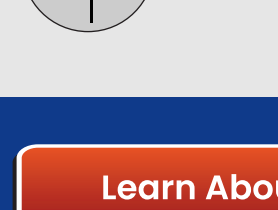
[Know More](#)



Falling Window

Gap between two bearish candles, indicating strong selling pressure.

[Know More](#)



High Wave

Candle with long upper and lower wicks and a small body, indicating volatility.

[Know More](#)

[Learn About Chart Patterns](#)

[Analyse Chart Patterns](#)